

### eHUB

eHUB is a reliable, secure and inexpensive method of connecting your CNC machines by interfacing with your Ethernet network. Each eHUB allows up to 8 serial port connections that connect directly to the machine tool, or are connected to an LCD-based E-Terminal.



- Ports: One 10/100 Ethernet interface and eight RS232 serial ports
- Supports software or hardware handshake
- Ethernet protocol: UDP/IP (utilizes TCP/IP setting of Windows)
- Interfaces with existing Ethernet network
- Serial port speed from 300 baud up to 153,600 baud
- Serial port handshake method: XON/XOFF or CTS/RTS
- Built in surge protection for serial ports
- Connections: CAT5 cables with standard RJ45 Ethernet termination

### E-Terminal (Optional If Necessary)

The E-Terminal connects between the eHUB and the machine tool. The E-Terminal assists with uploading and downloading of part programs, provides communication for machine monitoring and data collection. All connections use regular CAT5 cables terminated with RJ45 connectors.



#### Upload/download part programs

If the CNC controls are unable to send a program, or all the letters in a program name cannot be typed at the control, the E-Terminal is perfect for the job.

The E-Terminal can also issue a 'call' program used to request a particular part program from the computer or network server and the E-Terminal acts as a data link to the computer. The operator can type in all the letters and numbers for a requested program.

#### Assisting machine monitoring

E-Terminal is perfect when it is necessary to monitor events related to the machine tool.

This may be necessary if the machine tool cannot signal the start of a repair for instance, or the control has limited available special codes. E-Terminal then allows the operator to choose an event from its menu. It also immediately returns and displays the acknowledgement from the computer. This increases monitoring accuracy and helps to evaluate the performance of a machine tool.

#### Data Collecting

The E-Terminal also acts as the communication device when the data collection option is enabled. This function is fully programmable and offers great flexibility when you are deciding which data to collect.



Flexible, reliable, secure and cost-effective CNC file management using your existing network.

*Providing machine networking and DNC solutions for over 20 years!*

Visit our web site: [www.eNETDNC.com](http://www.eNETDNC.com)

For more information contact



Port CNC, Inc.  
4702 South 47th Street  
Greenfield, WI 53220  
[www.portcnc.com](http://www.portcnc.com)

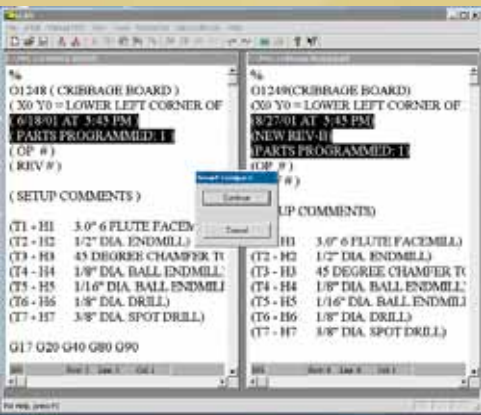


### Flexible

- Supports all CNC machine control types including proprietary Mazatrol format.
- System can be expanded to support an unlimited number of machines.
- The powerful standard system can be expanded to include Data Collection, Machine Monitoring, Web Access and Wireless applications.

- Able to drip/spoon feed multiple CNC machines simultaneously.
- Machine configuration allows for operator feedback messaging system.
- Able to inexpensively connect most NC tape machines to the system.

**Readily connects to any existing Ethernet network!**



### Automated File Compare

### Secure

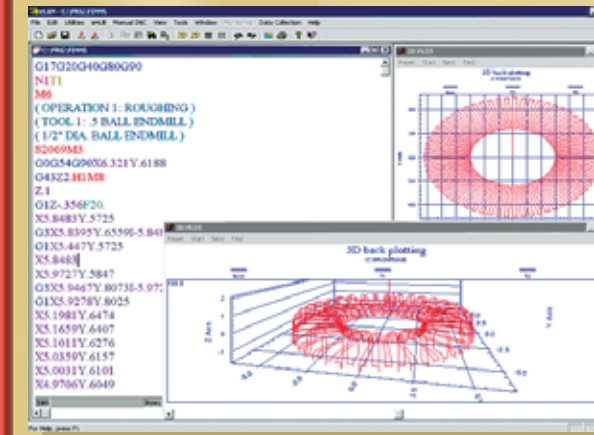
- eHubs provide for secure network access allowing access to only the specified directories.
- Original CNC files cannot be overwritten or deleted from shop floor access points.
- All operator generated programming suggestions are stored for review and possible implementation.
- Automated file compare feature reviews uploaded programs and highlights any suggested changes.
- Network access allows for back-up of all CNC files to the server.

### Reliable

- Software can be executed from any workstation.
- Runs on any Windows® platform.
- Industrial grade hardware and reliable software ensure data quality is preserved.
- Includes built-in surge protection for serial ports.
- Uses standard CAT5 cabling.

### Cost Effective

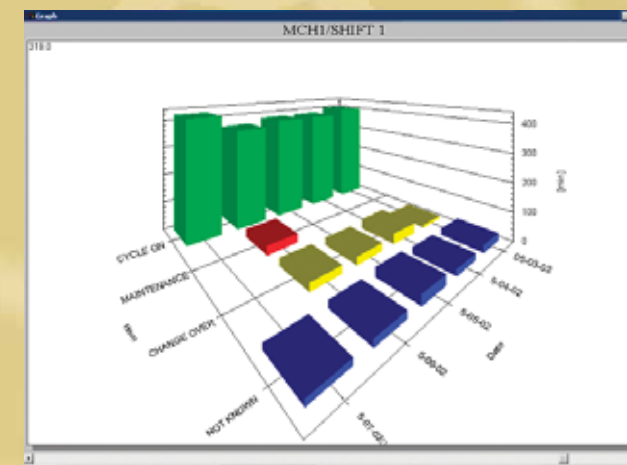
- Operators can upload and download CNC programs without leaving their machine or calling for support.
- Enhances shop productivity by reducing machine downtime.
- System design requires minimal hardware investment.
- User-friendly software reduces the cost of system administration and support.



### Interactive 2D and 3D Back Plotting allows for real time file editing!

### eNET Editor Features

- Edit up to ten CNC files simultaneously.
- The Smart File Compare feature highlights file changes for easy review.
- Editor allows up to three axis to be rotated simultaneously.
- Mass Modify any G code value throughout the CNC file.
- Multi-color G code display enhances editing feature.
- Programmer is able to expand or compress files for viewing and editing.
- Calculates cycle times of original and modified files to evaluate productivity gains.
- Right angle and bolt circle calculators are included.



### Additional Features Available

#### Machining Monitoring

The machine monitoring features allows for collection of real-time production data directly from the machine controls. Machine downtimes, cycle times and part counts can all be reviewed remotely using the Machine Monitoring feature and your existing network. The graphical display allows for easy review of data.

#### Data Collection

In addition to the machine monitoring, the eNET DNC system can also be configured to include data collection capabilities. With the addition of our E-Terminal, the DNC system can be upgraded to a full-featured data collection system allowing machine operators to communicate job-related information directly from their machine. This data can then be configured to upload into your existing shop floor management system.

#### Wireless Connections

In addition to the traditional network connection of your machine tools, we also offer a wireless connection. The wireless solution can be implemented to include all of the CNC machines or used in combination with the standard installation.