

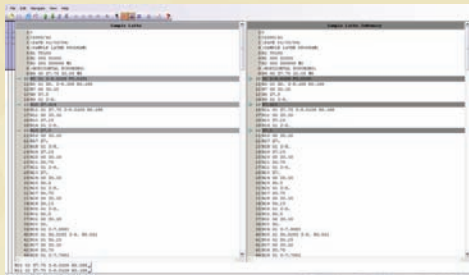
# Advanced CNC Editing

## eNETDNC Pro Editor

### System Features

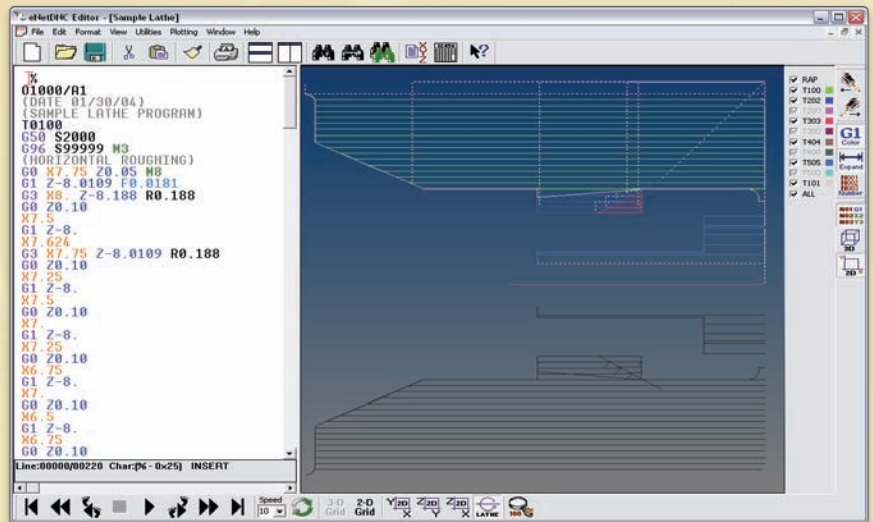
- Instant viewing of CNC Toolpath
- Enhanced viewing while plotting
- G-Code Editor
- Interactive 2D and 3D Back Plotting
- Advanced File Compare
- Search and replace entire file or highlighted text.
- Programs can be easily printed, viewed or edited.
- Math functions and mass modify features
- Renumber and remove sequence numbers
- G-code is displayed in easy to read
- Colors for each value, colors and fonts
- Change fonts and save as different themes
- Can be reconfigured
- CNC file can be compressed or expanded to have spaces between codes like your CNC
- Affordable pricing

and much more...

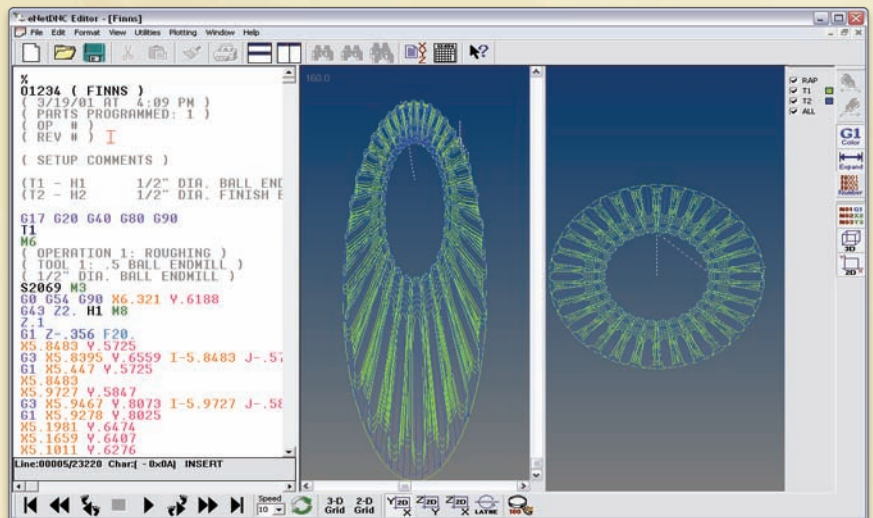


Compare the content of two files. Differences will be highlighted and can be changed immediately.

eNetDNC Pro Editor is the “big brother” to the eNetDNC editor and eNetDNC Lt. The Pro version is basically eNetDNC on steroids.

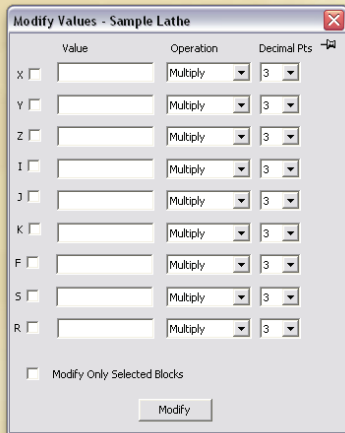


eNET Pro Editor, 2D and 3D back plot features allow visual verification of manual G-Code edits.



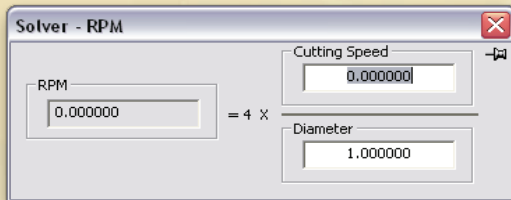
**Modify Values:** Add, subtract, multiply or divide a specified address (X,Y,Z...) with a specific number.

Modify the entire file, or only the highlighted portion. Define a string, Set the number of digits after the decimal point, or no decimal point at all.

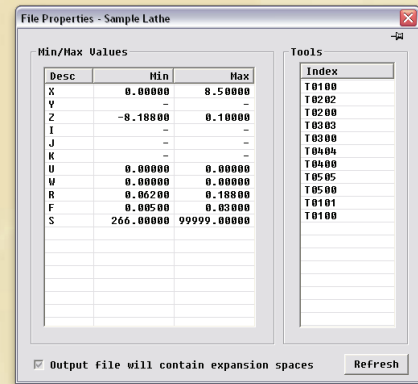


**RPM:** Do basic surface speed calculations using the RPM, Diameter and Surface Speed variables (both in inch/sec and feet/min).

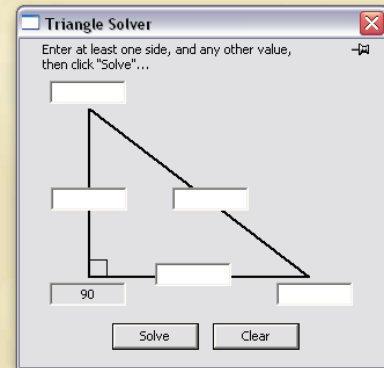
Supply any two data and the program will calculate the missing information.



**File Properties:** Find the Minimum/Maximum X,Y and Z dimensions and others. Pick which tool to go to. The check box will let you know if the spaces will be saved in the file.



**Right Angle Trig:** Perform simple trigonometric calculations on a right angle triangle. All angles specified/calculated in decimal degrees format.



**In addition to the features in the editor in eNetDNC or eNetDNC LT, eNet DNC Pro offers...**

- ✓ Instant viewing of CNC toolpath to be sure the correct part is selected and there are no errors.
- ✓ All commands related to plotting can be changed on the fly.
- ✓ While plotting, any tool or multiple tools can be turned on or off before.
- ✓ Intuitive spacing – ENet DNC Pro Editor can add spaces between each G code value as displayed on the CNC if spaces are not already displayed, Spaces will not be saved in the file.
- ✓ Intuitive Numbering – T CNC file can be renumbered on the fly. Numbers will automatically be added to files without line numbers. This can be set for screen viewing only or saved to the file.
- ✓ Themes – You can load or create your own themes to change the look of the editor.
- ✓ Advance File Properties – Shows all the minimum and maximum values of all the G codes used in the file, as well as all the tools. Simply click on any value to go right to that line in the program.
- ✓ Advance file compare – Allows easy viewing of differences between files and selecting what to keep and what to discard. Unlimited files size for paring even for files with over 100 new lines.
- ✓ Advance Modify Properties – Mass modify any part of the program, or the whole program.
- ✓ Print in landscape or portrait, as many columns as you like, and add a custom header.
- ✓ Unlimited UN-DOs
- ✓ More utilities and charts to assist in CNC programming
- ✓ Pin any utility screen for easy recall.